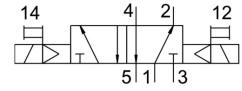
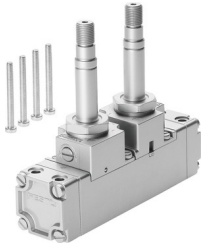


Air solenoid valve

CJM-5/2-1/2-CH

Part number: 6112

FESTO



Data sheet

Feature	Value
Valve function	5/2, bistable
Actuation type	Electrical
Pneumatic working port	Sub-base
Operating pressure	1.5 bar ... 10 bar
Type code	CJM
Type of control	Pilot-controlled
Symbol	00991005
Pneumatic connection 1	Sub-base
Pneumatic connection 2	Sub-base
Pneumatic connection 3	Sub-base
Pneumatic connection 4	Sub-base
Pneumatic connection 5	Sub-base
Note on materials	Contains paint-wetting impairment substances